

Data Reduction I part 1:

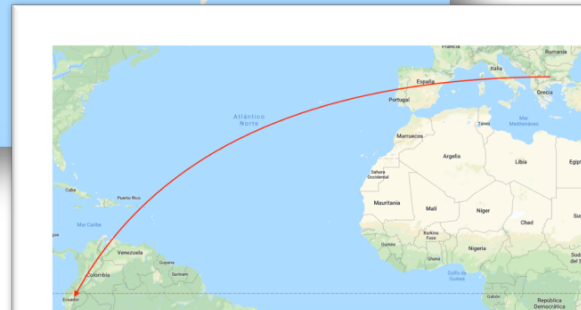
Herschel Interactive Processing Environment (HIPE)

Ivan Valtchanov

Herschel Instrument and Calibration Scientist

5-16 Mar 2018





Data Reduction I part 1: Herschel Interactive Processing Environment (HIPE)

Ivan Valtchanov

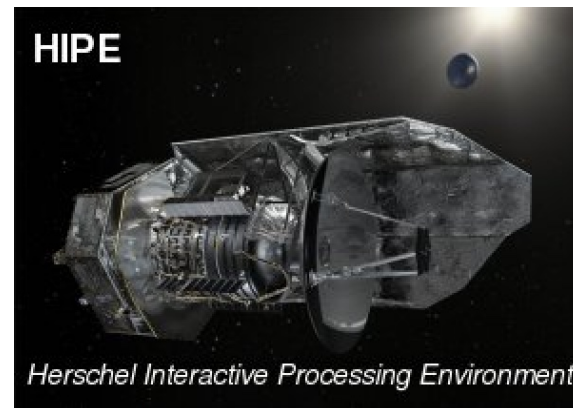
Herschel Instrument and Calibration Scientist

5-16 Mar 2018



What is HIPE?

- HIPE is the main gateway to the Herschel Data Processing (DP) System
 - DP is used for the Standard Product Generation (i.e. pipeline products)
 - Quality Control Pipeline
 - Quick-Look Analysis
 - **Interactive Analysis**
- Specifically developed for Herschel Data
- Most modules/tasks are written in **Java** with user scripts in **jython**.



Installing HIPE



<https://www.cosmos.esa.int/web/herschel/hipe-download>

Latest legacy version: 15.0.1

Comes with Java VM

SCIENCE MISSIONS

EUROPEAN SPACE AGENCY

SCIENCE & TECHNOLOGY

SIGN IN

herschel

Herschel » Data Processing » HIPE Download

Home

General Information

Overview

Observations

Data Products

Data Processing

Documentation

Publications

User Services

Herschel Helpdesk

HERSCHEL INTERACTIVE PROCESSING ENVIRONMENT (HIPE)

The software package for Herschel Interactive Processing Environment (HIPE) is the application that allows users to work with the Herschel data, including finding the data products, interactive analysis, plotting of data, and data manipulation.

- Which version of HIPE do I need ?
- HIPE Download Instructions
- Access HIPE developer builds
- HIPE Users' Documentation
- HIPE System Requirements
- HIPE Installation Instructions

WHICH VERSION OF HIPE DO I NEED ?

In general, users are recommended to use always the latest user release version of HIPE, as this is the latest version of HIPE which contains fully validated versions of all pipelines and of the extended interactive data processing packages which come with HIPE, and it has been subject to dedicated validation campaigns by an extended group of testers and astronomers. This is in principle the version recommended for a general user and for the processing of Herschel data from all instruments.

In the table below we list the latest recommendations made by the instrument ICs on which version should be used depending on the kind of analysis that you need to perform.

Observing mode	HIPE version	Latest Calibration Tree
SPIRE Photometry	HIPE 15.0.1	SPIRE_CAL_14_3
SPIRE FTS Spectroscopy	HIPE 15.0.1	SPIRE_CAL_14_3
HIFI	HIPE 15.0.1	HIFI_CAL_26_0
PACS Photometry	HIPE 15.0.1	PACS_CAL_78_0
PACS Spectroscopy	HIPE 15.0.1	PACS_CAL_78_0

HIPE DOWNLOAD INSTRUCTIONS

DOWNLOAD THE LATEST HIPE USER RELEASE INSTALLER

The latest HIPE User Release (v15.0.1) installer can be downloaded from the links below. This version of HIPE corresponds to the CIB system build [3262] of track hcsc-15.0. See the installation instructions on the different operating systems.

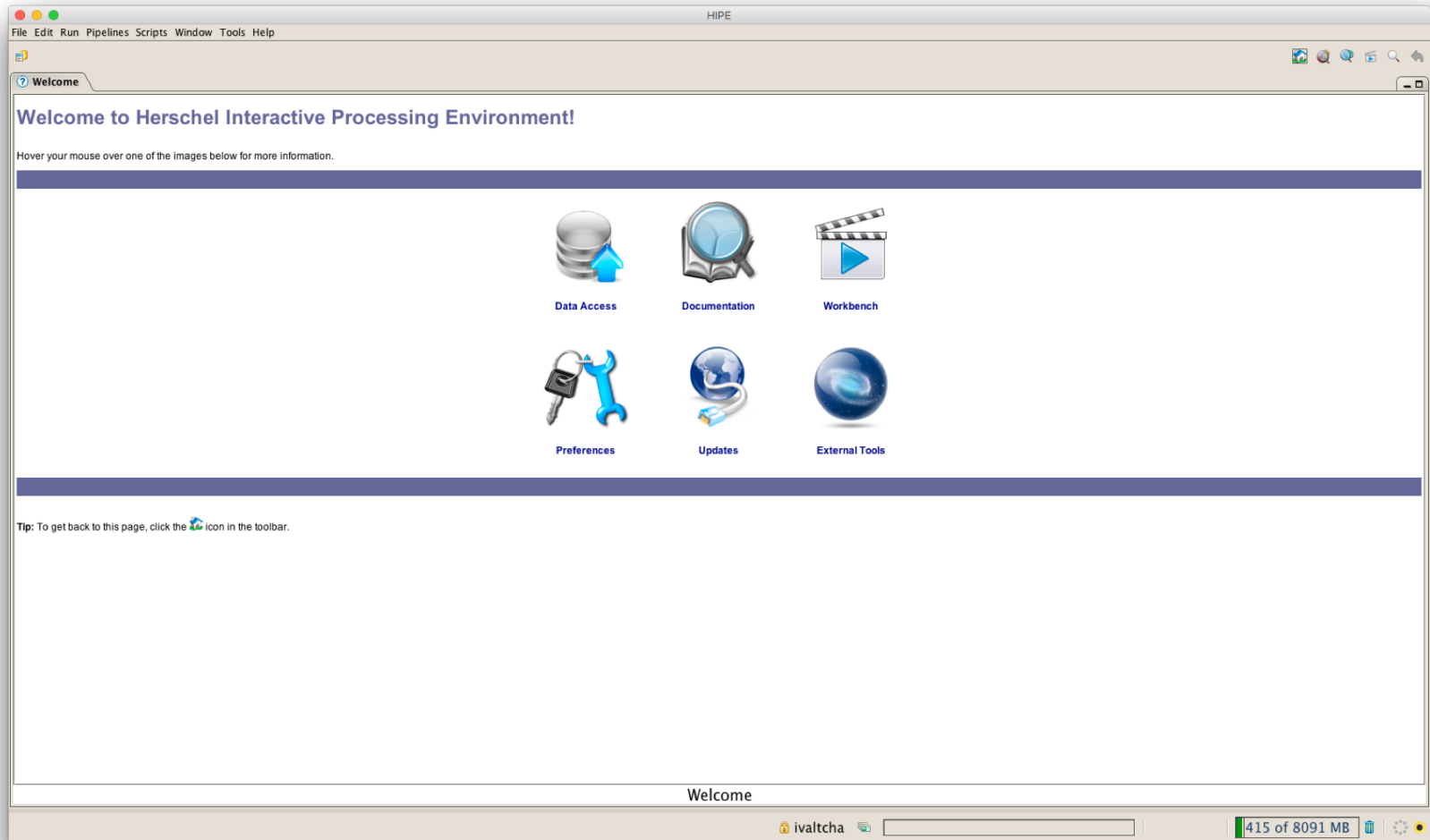
Important note: You have to keep your internet connection on during the process as you download all the necessary components during the installation.

Platform	With Java 32bit VM	With Java 64bit VM	Installation Instructions
Windows	Download HIPE 15.0.1	Download HIPE 15.0.1	View
MacOSX	Not available	Download HIPE 15.0.1	View

I. Valtchanov | COSPAR 2018, Quito, Ecuador | 5-16 Mar 2018 |

Agency

HIPE in a nutshell



TOC Search Glossary

Introductory

- Welcome
- Quick Start Guide
- HIPE Owner's Guide

Analysis Tools

- Data Analysis Guide
- Scripting Guide

HIPI

- The HIPI Data Reduction Guide
- HIPI Pipeline Specification
- HIPI Instrument and Calibration Page

SPIRE

- SPIRE Data Reduction Guide
- SPIRE Pipeline Specification Manual
- SPIRE Instrument and Calibration Page

PACS

- PACS Products Explained
- PACS Data Reduction Guide: Photometry
- PACS Data Reduction Guide: Spectroscopy
- PACS Instrument and Calibration Page

Reference


- HCSS User's Reference Manual
- HIPI User's Reference Manual
- PACS User's Reference Manual
- SPIRE User's Reference Manual
- Product Definition Document
- Product Definition Supplement

Developer Reference ([how to use](#))


- HCSS Developer's Reference Manual (API)
- HIPI Developer's Reference Manual (API)
- PACS Developer's Reference Manual (API)
- SPIRE Developer's Reference Manual (API)
- SPIRE Expert's Reference Manual (API)

hcss-15.0.3262

Welcome to the Herschel Interactive Processing Environment Help System



New to HIPE?
Click here for a [quick introduction](#)



Learn about the Help System:
[Help on Help](#)



Learn how to get data from the [Herschel Archive](#)



Learn about HIPI data

- [Data reduction guide](#)
- [Pipeline specification](#)
- [Data known issues](#)




Learn about PACS data

- Data reduction guide for [photometry](#) and [spectroscopy](#)
- [Data known issues](#)



Learn about SPIRE data


- [Data reduction guide](#)
- [Pipeline specification](#)
- [Data known issues](#)



[HIPE known issues](#)



Find out [what's new](#)



See a list of all the [available manuals](#)

Watch us on 

Follow us on 

HIPE and the Herschel Science Archive



- Seamless access to Herschel data

<https://www.cosmos.esa.int/web/herschel/home>

Need to be registered as Herschel User



herschel

HERSCHEL

EXPLORING THE FORMATION OF GALAXIES AND STARS
DÉCOUVRIR LA FORMATION DES GALAXIES ET DES ÉTOILES

Welcome to the **Herschel Astronomers' website** provided by the Herschel Science Centre (HSC) primarily for the scientific community. For additional ESA and external Herschel related web sites see link buttons above and "Useful links".

Herschel was launched on 14 May 2009! It is the fourth 'cornerstone' mission in the ESA science programme. With a 3.5 m Cassegrain telescope it is the largest space telescope ever launched. It is performing photometry and spectroscopy in approximately the 55-671 μm range, bridging the gap between earlier infrared space missions and

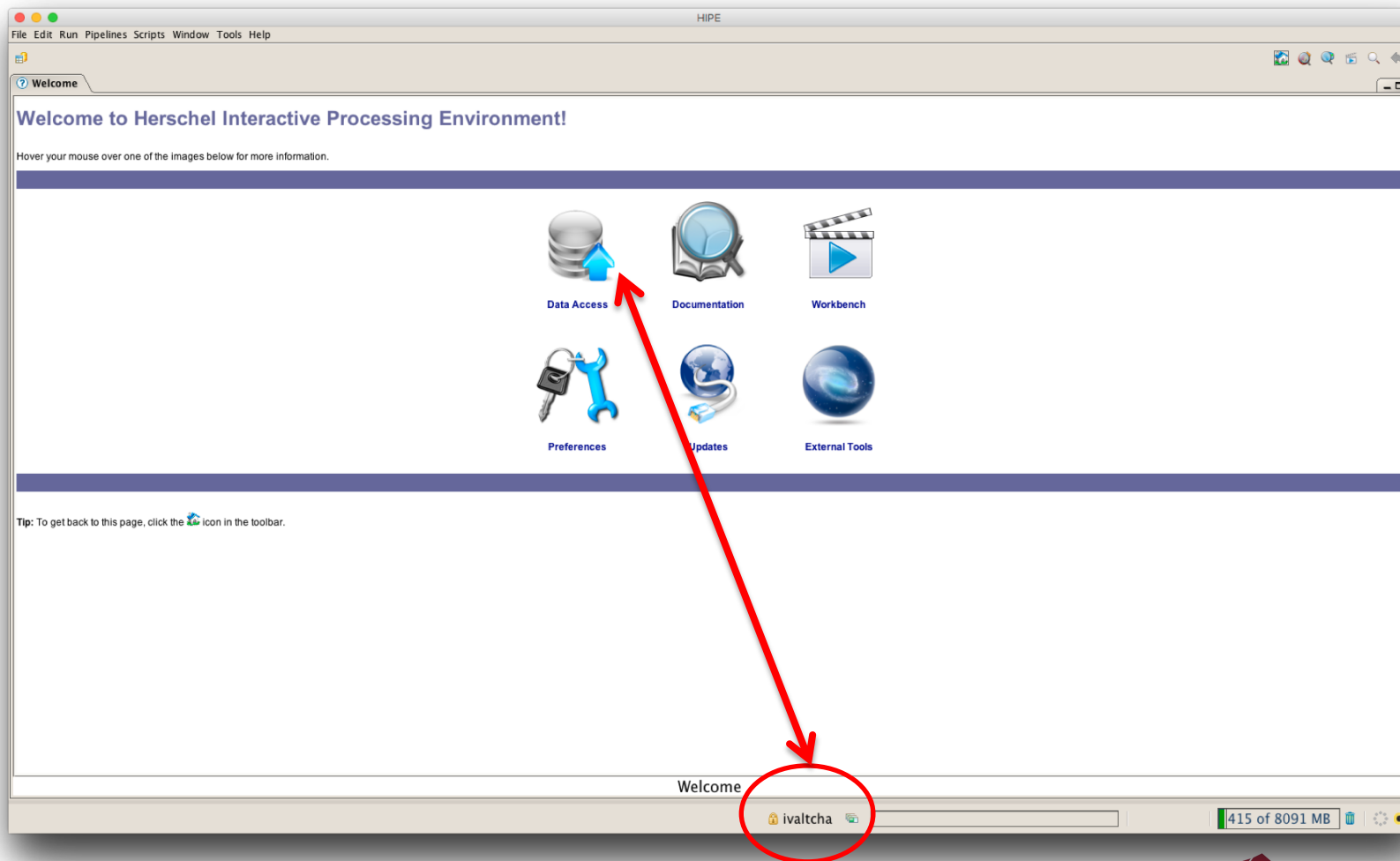
'STAR FORMATION ACROSS SPACE AND TIME' SYMPOSIUM

'Star Formation Across Space and Time' symposium material posted! The *Star Formation Across Space and Time* symposium was held on 11-14 November 2014. In the four days 59 talks were given and 54 posters displayed by about 120 attendees. The talks and most posters have been posted on the [symposium website](#). Thanks to everyone who participated and helped making the symposium a very enjoyable and successful event. Thank you!

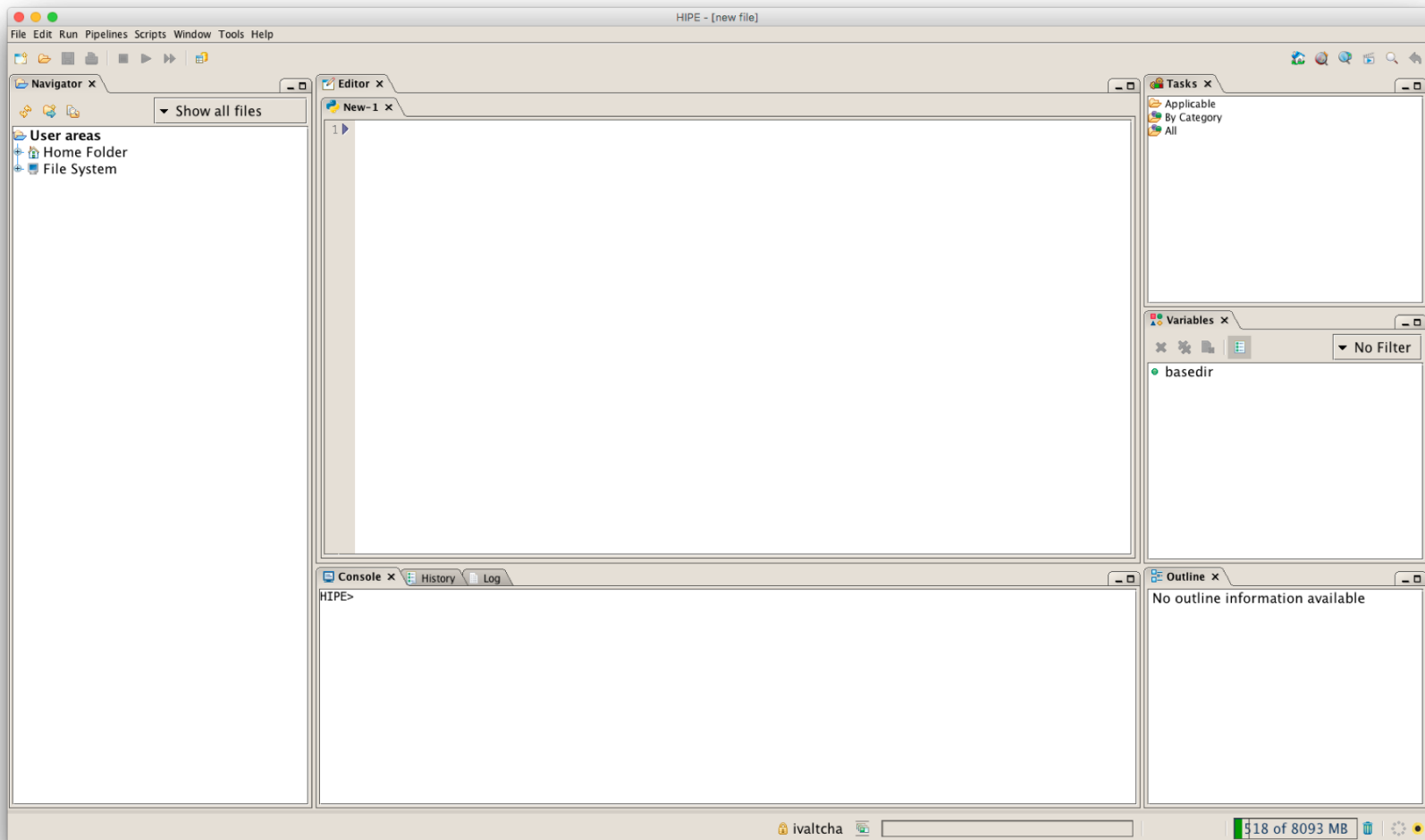
'THE UNIVERSE EXPLORED BY HERSCHEL' SYMPOSIUM

'The Universe Explored by Herschel' symposium material posted! The *The Universe Explored by Herschel* symposium was held on 15-18 October 2013 to present, discuss, and take stock of the scientific results based on Herschel to date. In the four days 114 talks were given and about 200 posters displayed by over 350 attendees. All talks have been posted on the [symposium website](#) as well as the posters we have received. We also want to thank everyone who participated and helped making the symposium a very successful event. Thank you!

HIPE access to Herschel data



HIPE workbench/interactive session



End of Part 1: HIPE

